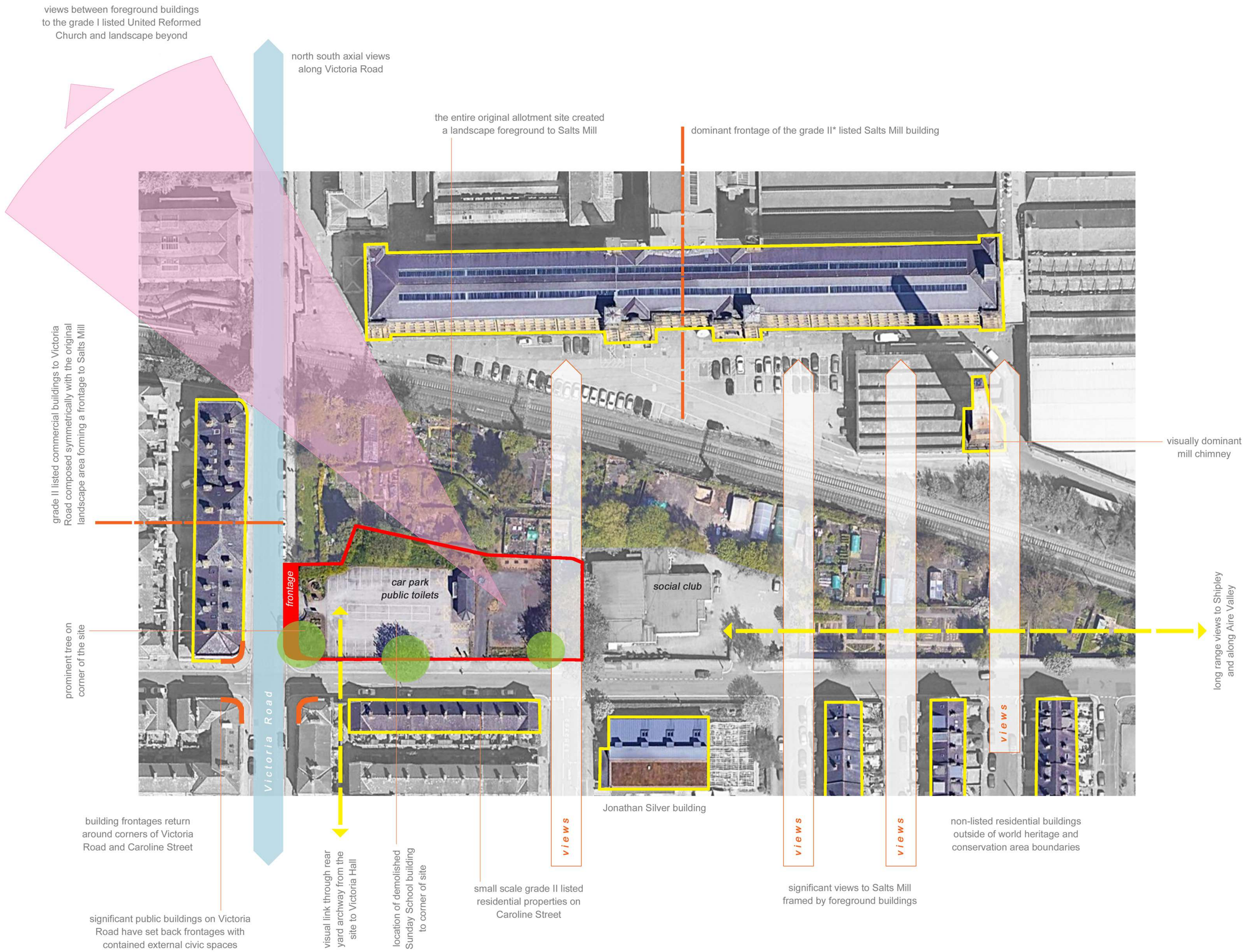


The immediate setting of the project site is the allotment gardens that were part of the original philanthropic vision for Saltaire. These created beneficial greenspace and a visual foreground to the long flank of Salts Mill. They were partially built upon when Salt gave over land to construct a Sunday School in 1876. This building was demolished in the 1970s and the land turned over to a surface car park and to public toilets. The land to the rear of the Sunday School was built on in the twentieth century and housed a Scout hut and the St John Ambulance Centre (both now demolished) in buildings similar in type to the adjacent Caroline Social Club which forms a boundary to our site. Several key views demonstrate attributes of Saltaire's Outstanding Universal Value, and views across and into the site, from Salts Mill, Saltaire Road, Victoria Road, Caroline Street and the adjacent shops and houses are important design considerations.



Views to the north-west from the site



Prominent corner of the site



The site is prominent in views from Salts Mill



Allotment gardens on the boundary of the site



A significant existing tree on the corner of the site



The existing car park is a poor quality space

site