

NVQ 4 Health and Social Care

edexcel 



A nationally recognised qualification approved by Edexcel

Benefits

- A flexible programme which can be tailored to meet employers' requirements.
- Covers all aspects of Health and Social Care.
- The course is based around reflective and evidence-based practice.
- Choose from a range of units suited to specific job roles – please see overleaf.
- Can be delivered entirely in the workplace.
- There are no examinations or tests to complete; assessors will visit the workplace to assess supervisors/managers on real tasks carried out as part of their job.
- Start dates throughout the year.

Costs

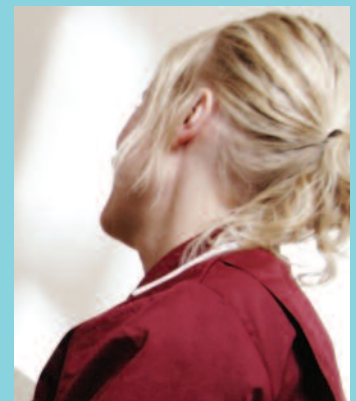
£960 inclusive of registration fees, college fees and assessment fees. The College will advise on any additional fee reductions that may be available.

Suitable for

Care staff already in senior positions with supervisory responsibility, who already hold an NVQ 3 in Health and Social Care and have at least 1 year post-qualification experience.

Find out more or to register interest

Contact our Employer Hotline on **(01274) 327327** or e-mail **enquiries@shipleigh.ac.uk** for further details.



Shipleigh College

Exhibition Building,
Exhibition Road, Saltaire
Shipleigh BD18 1BR

Telephone: **01274 327222**

Fax: **01274 327201**

www.shipleigh.ac.uk

Giving your staff the skills they need

Units within the qualification

Mandatory units

- HSC41** Use and develop methods and systems to communicate, record and report
- HSC42** Contribute to the development and maintenance of healthy and safe practices in the working environment
- HSC43** Take responsibility for the continuing professional development of self and others
- HSC45** Develop practices which promote choice, well-being and protection of all individuals

Optional units

(This list is a sample of some of the option units available)

- HSC411** Manage a service which achieves the best possible outcomes for the individual
- HSC412** Ensure individuals and groups are supported appropriately when experiencing, significant life events and transitions
- HSC414** Assess individual needs and preferences
- HSC415** Produce, evaluate and amend service delivery plans to meet individual needs and preferences
- HSC416** Develop, implement and review care plans with individuals
- HSC430** Support the protection of individuals, key people and others
- HSC434** Maintain and manage records and reports
- HSC435** Manage the development and direction of the provision
- HSC436** Promote and manage a quality provision

Working together... reaping the benefits

Visit our website for details on our courses and for the portfolio of **learnirect** e-courses

www.shipleigh.ac.uk